

ORIGINAL TITLE PAGE

T.S.A.N. NO. 1

ADVENTURE PHOTO TOURS INC.
dba Adventure Photo Tours
dba KISS Limousines

**COMMON CARRIER OF PASSENGERS
TARIFF NO. 1**

Rules, regulations and rates for on-call, irregular route, transportation of passengers and their baggage in scenic tours, charter service and special services in vehicles with a passenger capacity less than 15, including the driver, between points and places in the State of Nevada.

CPCN No. 1047, Sub 1

Issued: 04/05/2013

Effective: 06/01/2013

ISSUED BY:
DONNA M. TRYON, PRESIDENT
ADVENTURE PHOTO TOURS INC.
3111 S. VALLEY VIEW BLVD. X-106
LAS VEGAS, NEVADA 89102

ACCEPTED

AUG 28 2013

Nevada Transportation Authority
Las Vegas, Nevada

ORIGINAL PAGE 1

**ADVENTURE PHOTO TOURS INC.
dba Adventure Photo Tours
dba KISS Limousines
COMMON CARRIER OF PASSENGERS
TARIFF NO. 1**

Upon receipt of new or revised pages a check mark must be placed opposite the "Correction Number" (shown below) corresponding to the number shown in the lower left hand corner of the new or changed page. If correction numbers are properly checked as received, check marks will appear in consecutive order without omission. However, if check marks indicate that a revised page has not yet been received, request should at once be made to the issuing carrier for a copy of the new or revised page.

CORRECTION NUMBERS

1x	7x	13x	19x	25
2x	8x	14x	20x	26
3x	9x	15x	21x	27
4x	10x	16x	22x	28
5x	11x	17x	23	29
6x	12x	18x	24	30

EXPLANATION OF ABBREVIATIONS AND OTHER REFERENCE MARKS

(+)	Increase	dba	Doing business as
(-)	Decrease	Nev	Nevada
(δ)	No change	No	Number
(*)	Change	BLM	Bureau of Land Management
(%)	Percent	Nos	Numbers
(\$)	Dollar or dollars	TSA.	Transportation Services Authority of Nevada
		N	New
		C	Change, neither increase nor reduction
		I	Increase
		R	Reduction

APPLICATION OF CARRIER'S OPERATIVE RIGHTS

On-call, irregular route, transportation of passengers and their baggage in scenic tours, charter services, and special services in vehicles with a passenger capacity less than 15, including the driver, between points and places in the State of Nevada.

ISSUED: 04/01/2013

EFFECTIVE: 06/01/2013

**ISSUED BY:
DONNA M. TRYON, PRESIDENT
ADVENTURE PHOTO TOURS INC.
3111 S. VALLEY VIEW BLVD. X-106
LAS VEGAS, NEVADA 89102**

ACCEPTED
AUG 28 2013
Nevada Transportation Authority
Las Vegas, Nevada

**ADVENTURE PHOTO TOURS INC.
 dba Adventure Photo Tours
 dba KISS Limousines
 COMMON CARRIER OF PASSENGERS
 TARIFF NO. 1**

Rule No.	RULES AND REGULATIONS
1.	<p><u>MINIMUM LOAD REQUIREMENTS:</u> For Scenic Tours and Special Services, a minimum of two adult fares must be paid to warrant service being offered. If less than two individuals request that service be offered, that individual would be required to pay the full fare as though there were two individuals. For Charter Services a minimum of 1 hour is required with billing at ½ hour increments.</p>
2.	<p><u>UNACCOMPANIED CHILDREN:</u> No person under the age of 18 will be permitted to take part in any transportation service unless they are accompanied by a parent, guardian, or other responsible adult. "Adult" in this sense means a person 18 years or older who is responsible for the child during the transportation service.</p>
3.	<p><u>INFANTS:</u> No child will be allowed to sit in anyone's lap. Infants and other small children who require infant seats or child safety seats will be allowed on the provision that the parent or a responsible adult provide such seat and install said seat in the vehicle using the vehicle safety belts.</p>
4.	<p><u>ALCOHOL, RECREATIONAL DRUGS:</u> The consumption of alcohol or recreational drugs will not be allowed in any vehicle at any time.</p>
5.	<p><u>NON-DISCRIMINATION:</u> The carrier will not refuse service to anyone because of race, creed, sex, or national origin.</p>
6.	<p><u>RIGHT TO REFUSE SERVICE:</u> The carrier reserves the right to refuse service to anyone who may appear to be under the influence of alcohol and/or drugs. They also reserve the right to refuse service to anyone who may display an inability to care for themselves or displays conduct which may disrupt the pleasure and safety of passengers or employees.</p>
7.	<p><u>SEAT BELTS:</u> All passengers will be required to wear fastened seat belts at any time when the vehicle is in motion or on a roadway. Carrier reserves the right to refuse service to anyone who cannot or will not wear a seat belt.</p>

ISSUED: 04/01/2013

EFFECTIVE: 06/01/2013

**ISSUED BY:
 DONNA M. TRYON, PRESIDENT
 ADVENTURE PHOTO TOURS INC.
 3111 S. VALLEY VIEW BLVD. X-106
 LAS VEGAS, NEVADA 89102**

ACCEPTED

AUG 28 2013

Nevada Transportation Authority
 Las Vegas, Nevada

3rd REVISED PAGE 3
cancels
2nd REVISED PAGE 3

T.S.A.N. NO. 1

ADVENTURE PHOTO TOURS INC.
dba Adventure Photo Tours
dba KISS Limousines
COMMON CARRIER OF PASSENGERS
TARIFF NO. 1

Rule
No.

RULES AND REGULATIONS

8. TRIP CANCELLATION OR REROUTING:
The carrier reserves the right to cancel or reroute any given trip when weather conditions, health hazards or equipment malfunctions may affect the safety of passengers or employees. If a trip does not meet the minimum load requirements for reasons beyond our control, such as last minute cancellations, we reserve the right to cancel, reroute or reschedule the trip.
9. SMOKING:
Smoking will not be allowed in the vehicle.
10. CARRIERS LIABILITY:
Carrier will not be liable for loss of personal property or injury, as detailed in the Release of Liability form to be executed by all customers.
11. DISCOUNTS:
Once minimum load requirements have been met for tours, discounts may be offered as follows:
- | | |
|--------------------------------------------------|---------------------|
| Tours: Children under 12 years of age , | see rates on page 5 |
| Seniors over 60 years of age (with ID), | see rates on page 5 |
| Students (with ID) | see rates on page 5 |
| Charter: Seniors over 60 years of age (with ID), | see rates on page 7 |
12. APPLICATION OF RATES:
Rates are listed on pages 5, 7 & 8. For Scenic Tours and Special Services the time length of the trip will be determined from last "pick-up" to the time of first expected "drop-off". For Charter Services the rates apply from the time the Limousine is dispatched until the time when the Limousine is expected to return to company station.

ISSUED: 04/01/2013

EFFECTIVE: 06/01/2013

ISSUED BY:
DONNA M. TRYON, PRESIDENT
ADVENTURE PHOTO TOURS INC.
3111 S. VALLEY VIEW BLVD. X-106
LAS VEGAS, NEVADA 89102

ACCEPTED

AUG 28 2013

Nevada Transportation Authority
Las Vegas, Nevada

2nd REVISED PAGE 4
cancels
1st REVISED PAGE 4

T.S.A.N. NO. 1

ADVENTURE PHOTO TOURS INC.
dba Adventure Photo Tours
dba KISS Limousines
COMMON CARRIER OF PASSENGERS
TARIFF NO. 1

Rule No.	RULES AND REGULATIONS
13.	<p><u>REFUNDS:</u> Confirmed reservations canceled by the customer at least 48 hours prior to the trip date will be charged a \$25 per person cancellation fee. Confirmed reservations canceled between 48 and 24 hours prior to the date of the trip will be charged 50% of the fare. Confirmed reservations cancelled less than 24 hours prior to the trip date will be charged in full. No refunds will be allowed if a customer is refused service because he/she appears to be under the influence of alcohol or drugs, or if he/she is refused service because he/she displays an inability to care for themselves or displays conduct which may disrupt the pleasure and/or safety of passengers or employees. No refund will be given to anyone who is refused service because of refusal to wear a seat belt or follow the rules and regulations of the carrier.</p> <p>If Adventure Photo Tours Inc. cancels a trip for any reason, bad weather or inadequate load requirements, a 100% refund will be issued. Adventure Photo Tours Inc. reserves the right to cancel any trip.</p>
14.	<p><u>SCHEDULE:</u> Service will be offered 365 days a year.</p>
15.	<p><u>BAGGAGE:</u></p> <ul style="list-style-type: none">a) Hand baggage shall not exceed forty (40) pounds per bagb) Each passenger will be allowed no more than two bagsc) Articles with sharp edges will not be carried unless safely and securely packagedd) Explosives, inflammables, or harmful liquids will not be transported.
15a.	<p><u>LIABILITY:</u> Adventure Photo Tours, Inc is not responsible for any lost property that is left in a vehicle. Under NAC706.333,</p> <ul style="list-style-type: none">1. A claim by a shipper or consignor against a common or contract motor carrier for lost or damaged freight or baggage must be submitted to the carrier within 7 days after the loss or damage is discovered.2. Within 14 days after receipt of the claim, the carrier shall:<ul style="list-style-type: none">(a) Compensate the shipper or consignor; or(b) Deliver to the shipper or consignor a written denial of the claim.3. A denial of a claim may be appealed by the shipper or consignor to the Authority.
16.	<p><u>ANIMALS:</u> Live animals will not be carried except for Seeing Eye dogs, and other animals assisting handicapped customers, in the performance of their duties.</p>

ISSUED: 04/01/2013

EFFECTIVE **ACCEPTED**

ISSUED BY: DONNA M. TRYON, PRESIDENT
ADVENTURE PHOTO TOURS INC.
3111 S. VALLEY VIEW BLVD. X-106
LAS VEGAS, NEVADA 89102

AUG 28 2013

Nevada Transportation Authority
Las Vegas, Nevada

4th REVISED PAGE 5
 cancels
 3rd REVISED PAGE 5

T.S.A.N. NO. 1

ADVENTURE PHOTO TOURS INC.
 dba Adventure Photo Tours
 dba. KISS Limousines
COMMON CARRIER OF PASSENGERS
TARIFF NO. 1

RATES AND CHARGES for SCENIC TOURS

<u>TOUR TITLE</u>	<u>APPROXIMATE TIME</u>	<u>ADULT FARE</u>
1a. Red Rock Vistas	4 hours	\$ 75.00
1b. Red Rock Canyon – Spring Mountain Ranch/Bonnie Springs	5 hours	\$ 89.00
2. Joshua Tree Forest in Spring Mountains	4 hours	\$ 75.00
3a. Valley of Fire – Lost City Museum	7 hours	\$ 129.00
3b. Logan Wash – Valley of Fire	7 hours	\$ 150.00
3c. Valley of Fire ½ Day	5 hours	\$ 109.00
4. Gold Mine - Ghost Town Tour	5 hours	\$ 112.50
5. Goodsprings Valley Ghost Mines	4 hours	\$ 75.00
6. Area 51	10 hours	\$ 199.00
7. Machine Gun History Tour	3 hours	\$ 139.00

(Price includes transportation and all fees for Machine Gun Store)

NOTE: Rates are based on a minimum load of two adult passengers. Less passengers will be taken provided the minimum charge for two passengers is met. (Refer to Tariff Rule No. 1)

As provided by NRS706.351, the following discounts may be applied once the minimum fare requirements are met: Children's discounts are applicable to those twelve years of age and under. Children must be accompanied by a responsible adult. Seniors over 60 years of age and students with ID (Refer to Tariff Rules No. 2 & 11)

<u>TOUR TITLE</u>	<u>APPROXIMATE TIME</u>	<u>CHILD, STUDENT AND SENIOR FARES</u>
1a. Red Rock Vistas	4 hours	\$ 60.00
1b. Red Rock Canyon – Spring Mountain Ranch/Bonnie Springs	5 hours	\$ 75.00
2. Joshua Tree Forest in Spring Mountains	4 hours	\$ 60.00
3a. Valley of Fire – Lost City Museum	7 hours	\$ 115.00
3b. Logan Wash – Valley of Fire	7 hours	\$ 130.00
3c. Valley of Fire (½ Day)	5 hours	\$ 89.00
4. Gold Mine - Ghost Town Tour	5 hours	\$ 95.00
5. Goodsprings Valley Ghost Mines	4 hours	\$ 75.00
6. Area 51	10 hours	\$ 169.00
7. Machine Gun History Tour	3 hours	\$ 139.00

(Price includes transportation and all fees for Machine Gun Store)

Times are approximate and should be accurate within thirty minutes. Times may be adjusted to accommodate individuals requesting to extend the tour; the rates will be adjusted accordingly at \$20.00 per hour. All passengers must be in agreement in order to extend the tour.

In the event of severe weather conditions or a mechanical breakdown during a tour the rate will be adjusted to \$20.00 per hour per person for the amount of time completed of the tour. (Subtract length of time spent waiting for repair or pick up in different vehicle from the original scheduled time of tour)

Additional activities may be included with any of our scenic tours. The cost of the special activity will be billed separately from the transportation.

ISSUED: 04/01/2013

EFFECTIVE **ACCEPTED**

ISSUED BY:

DONNA M. TRYON, PRESIDENT
ADVENTURE PHOTO TOURS INC.
3111 S. VALLEY VIEW BLVD. X-106
LAS VEGAS, NEVADA 89102

AUG 28 2013

Nevada Transportation Authority
 Las Vegas, Nevada

2nd REVISED PAGE 6
cancels
1st REVISED PAGE 6

T.S.A.N. NO. 1

ADVENTURE PHOTO TOURS INC.
dba Adventure Photo Tours
dba. KISS Limousines
COMMON CARRIER OF PASSENGERS
TARIFF NO. 1

DISCRIPTIONS OF SCENIC TOURS

- 1a. Red Rock Vistas
See 2nd Revised Page 6A
- 1b. Red Rock Canyon – Spring Mountain Ranch/Bonnie Springs
See 2nd Revised Page 6A
2. Joshua Tree Forest in Spring Mountains
See Original Page 6B
- 3a. Valley of Fire – Lost City Museum
See 2nd Revised Page 6C
- 3b. Logan Wash – Valley of Fire
See 2nd Revised Page 6C
- 3c. Valley of Fire (12 day)
See 2nd Revised Page 6C
4. Gold Mine - GhostTown Tour
See 1st Revised Page 6D
5. Goodsprings Valley Ghost Mines
See 1st Revised Page 6E
6. Area 51
See 2nd Revised Page 6F

ISSUED: 04/01/2013

EFFECTIVE: 06/01/2013

ISSUED BY:
DONNA M. TRYON, PRESIDENT
ADVENTURE PHOTO TOURS INC.
3111 S. VALLEY VIEW BLVD. X-106
LAS VEGAS, NEVADA 89102

ACCEPTED

AUG 28 2013

Nevada Transportation Authority
Las Vegas, Nevada

2nd REVISED PAGE 6A
cancels
1st REVISED PAGE 6A

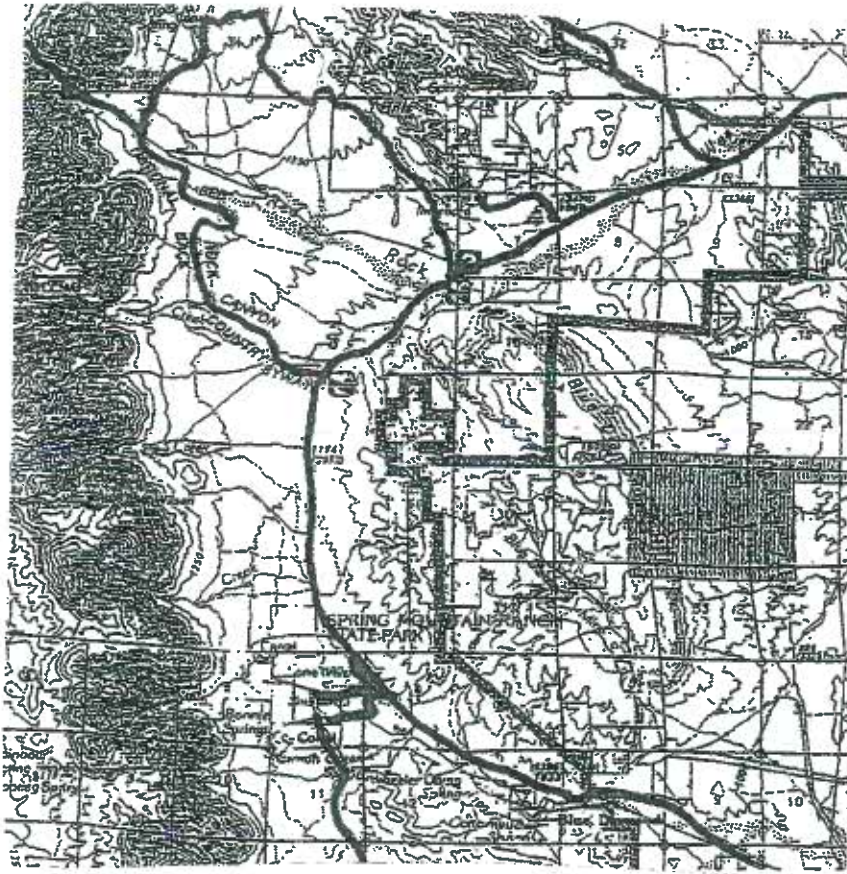
T.S.A.N. NO. 1

ADVENTURE PHOTO TOURS INC.
dba Adventure Photo Tours
dba KISS Limousines
COMMON CARRIER OF PASSENGERS
TARIFF NO. 1

DISCRIPTIONS OF SCENIC TOURS

TOUR #1a RED ROCK VISTAS

TOUR #1b RED ROCK CANYON – Spring Mountain Ranch/Bonnie Springs
Includes a stop at Spring Mountain Ranch and/or Bonnie Springs



ISSUED: 04/01/2013

EFFECTIVE: ~~06/01/2013~~

ISSUED BY:
DONNA M. TRYON, PRESIDENT
ADVENTURE PHOTO TOURS INC.
3111 S. VALLEY VIEW BLVD. X-106
LAS VEGAS, NEVADA 89102

ACCEPTED

AUG 28 2013

Nevada Transportation Authority
Las Vegas, Nevada

**ADVENTURE PHOTO TOURS INC.
dba Adventure Photo Tours
dba. KISS Limousines
COMMON CARRIER OF PASSENGERS
TARIFF NO. 1**

DISCRIPTIONS OF SCENIC TOURS

TOUR #2 JOSHUA TREE FOREST IN SPRING MOUNTAINS



ISSUED: 04/01/2013

EFFECTIVE: 06/01/2013

**ISSUED BY:
DONNA M. TRYON, PRESIDENT
ADVENTURE PHOTO TOURS INC.
3111 S. VALLEY VIEW BLVD. X-106
LAS VEGAS, NEVADA 89102**

ACCEPTED

AUG 28 2013

Nevada Transportation Authority
Las Vegas, Nevada

2nd REVISED PAGE 6C
cancels
1st REVISED PAGE 6C

T.S.A.N. NO. 1
ADVENTURE PHOTO TOURS INC.
dba Adventure Photo Tours
dba. KISS Limousines
COMMON CARRIER OF PASSENGERS
TARIFF NO. 1

DISCRIPTIONS OF SCENIC TOURS

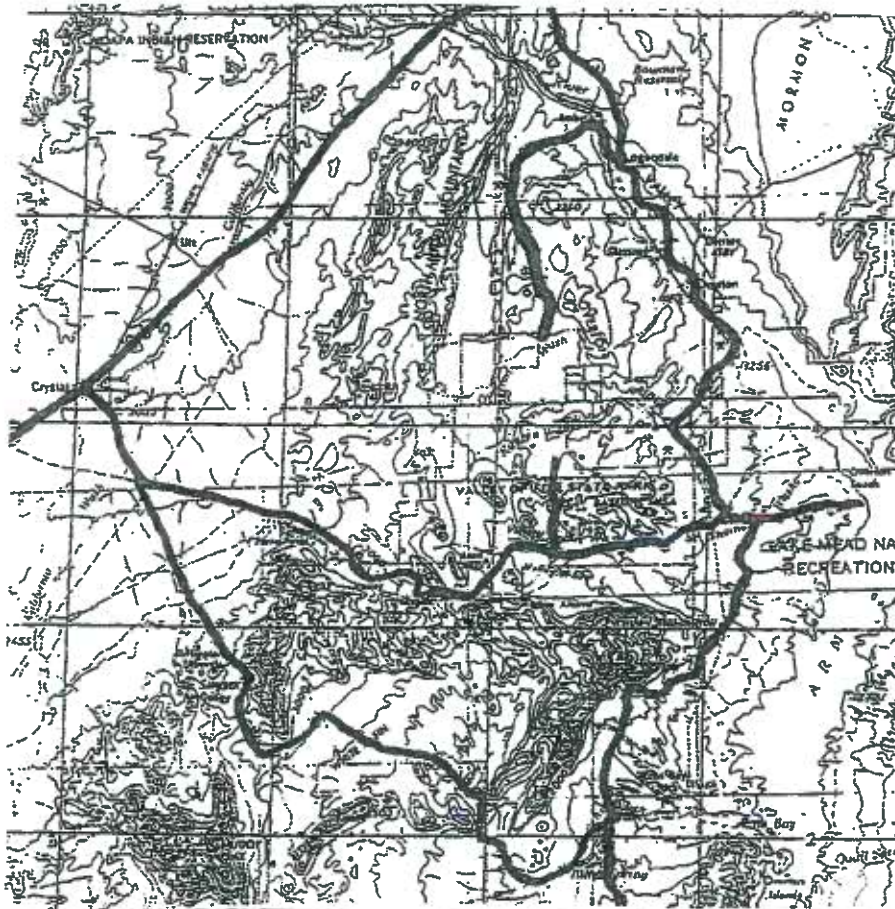
TOUR #3a VALLEY OF FIRE – LOST CITY MUSEUM

Includes stop at Lost City Museum

TOUR #3b LOGAN WASH – VALLEY OF FIRE

Includes additional off-road section

TOUR #3c VALLEY OF FIRE (1/2 day)



ISSUED: 04/01/2013

EFFECTIVE: 06/01/2013

ISSUED BY:
DONNA M. TRYON, PRESIDENT
ADVENTURE PHOTO TOURS INC.
3111 S. VALLEY VIEW BLVD. X-106
LAS VEGAS, NEVADA 89102

ACCEPTED

AUG 28 2013

Nevada Transportation Authority
Las Vegas, Nevada

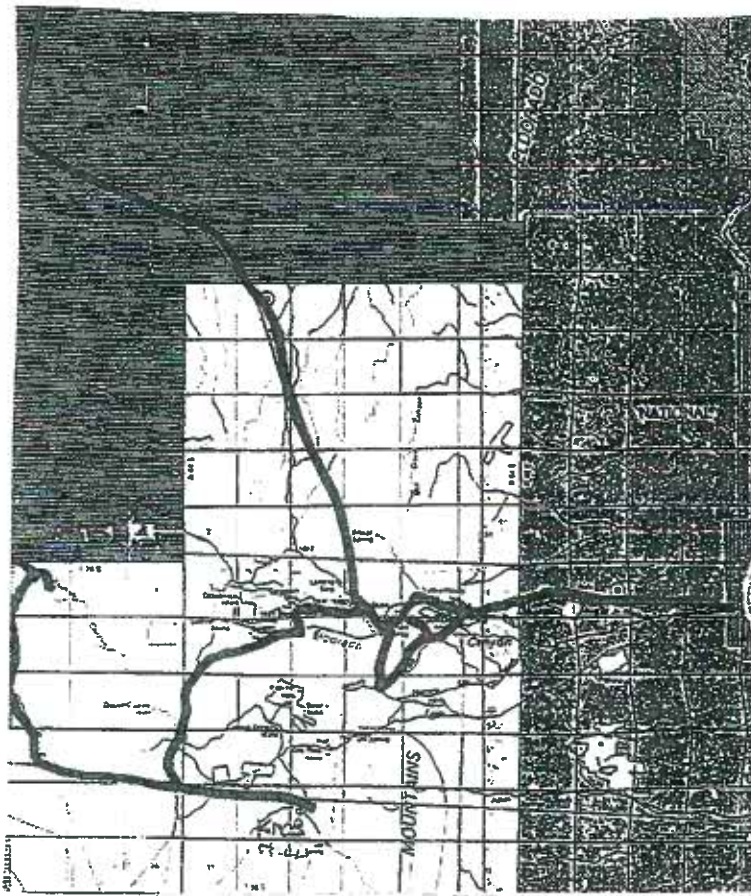
1st REVISED PAGE 6D
cancels
ORIGINAL PAGE 6D

T.S.A.N. NO. 1

ADVENTURE PHOTO TOURS INC.
dba Adventure Photo Tours
dba. KISS Limousines
COMMON CARRIER OF PASSENGERS
TARIFF NO. 1

DISCRIPTIONS OF SCENIC TOURS

TOUR #4 GOLD MINE - GHOST TOWN TOUR



ISSUED: 04/01/2013

EFFECTIVE: 06/01/2013

ISSUED BY:
DONNA M. TRYON, PRESIDENT
ADVENTURE PHOTO TOURS INC.
3111 S. VALLEY VIEW BLVD. X-106
LAS VEGAS, NEVADA 89102

ACCEPTED

AUG 28 2013

Nevada Transportation Authority
Las Vegas, Nevada

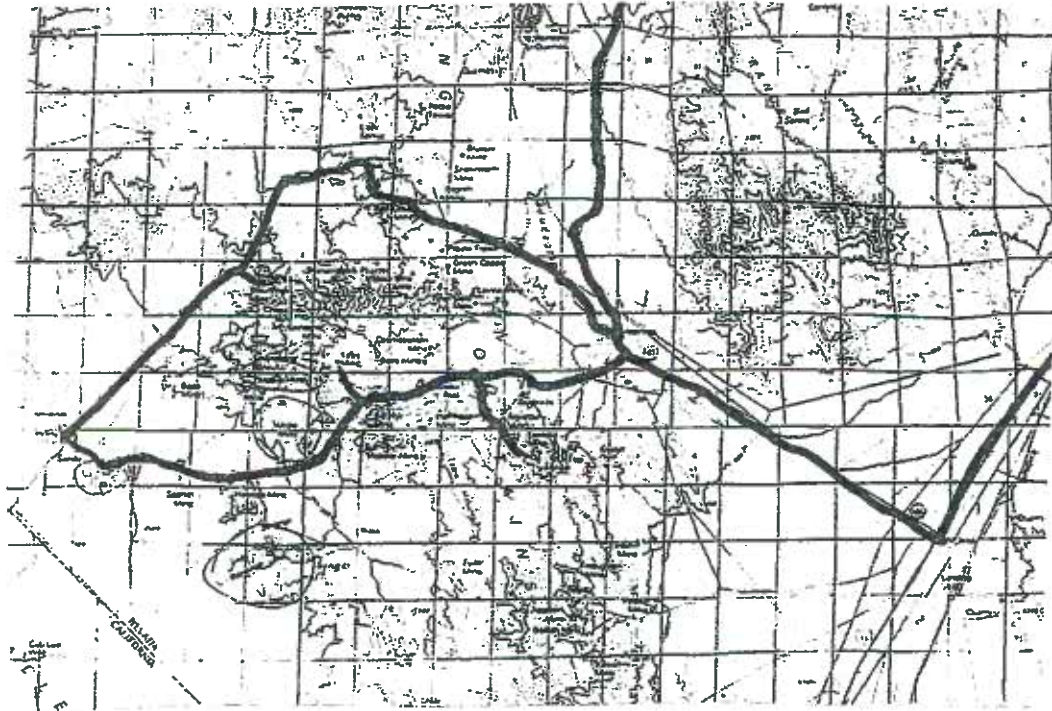
1st REVISED PAGE 6E
cancels
ORIGINAL PAGE 6E

T.S.A.N. NO. 1

ADVENTURE PHOTO TOURS INC.
dba Adventure Photo Tours
dba. KISS Limousines
COMMON CARRIER OF PASSENGERS
TARIFF NO. 1

DISCRIPTIONS OF SCENIC TOURS

TOUR #5 GOODSPRINGS VALLEY GHOST MINES



ISSUED: 04/01/2013

EFFECTIVE: 06/01/2013

ISSUED BY:
DONNA M. TRYON, PRESIDENT
ADVENTURE PHOTO TOURS INC.
3111 S. VALLEY VIEW BLVD. X-106
LAS VEGAS, NEVADA 89102

ACCEPTED

AUG 28 2013

Nevada Transportation Authority
Las Vegas, Nevada

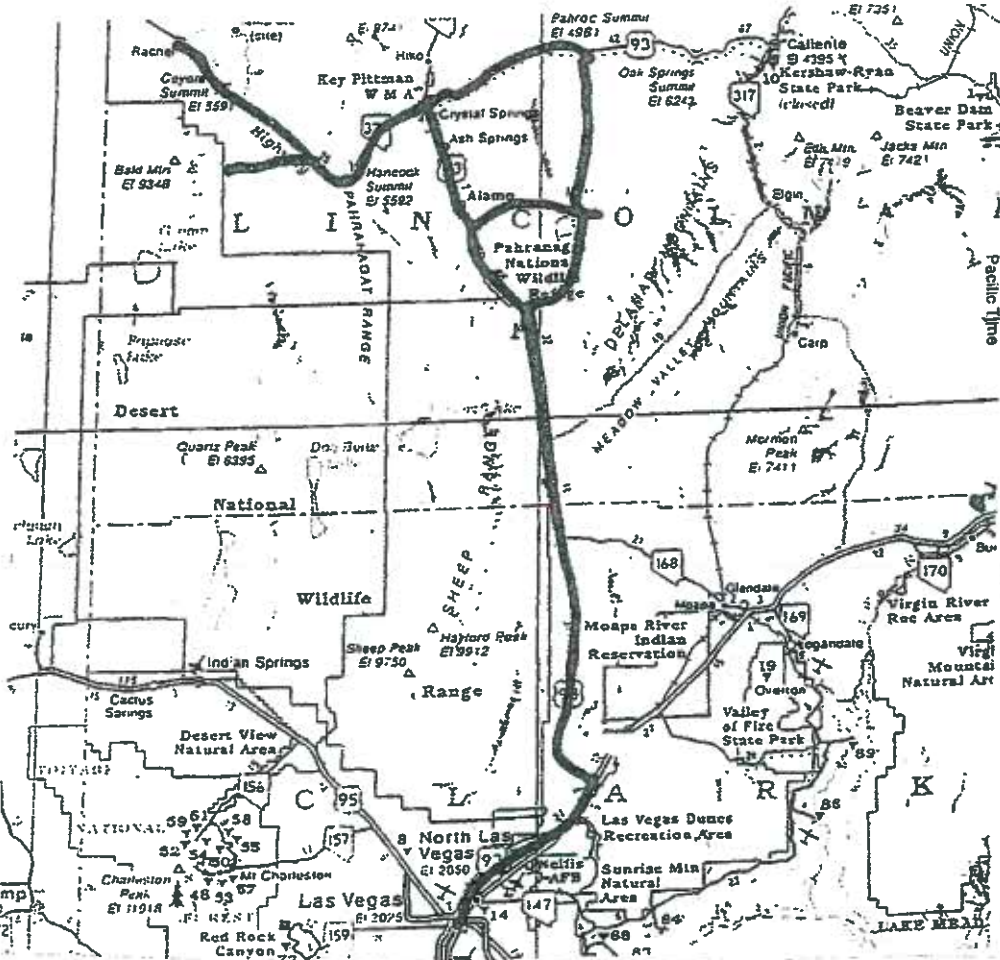
2nd REVISED PAGE 6F
cancels
1st REVISED PAGE 6F

T.S.A.N. NO. 1

ADVENTURE PHOTO TOURS INC.
dba Adventure Photo Tours
dba. KISS Limousines
COMMON CARRIER OF PASSENGERS
TARIFF NO. 1

DISCRIPTIONS OF SCENIC TOURS

TOUR #7 AREA 51



ISSUED: 04/01/2013

EFFECTIVE: 06/01/2013

ISSUED BY:
DONNA M. TRYON, PRESIDENT
ADVENTURE PHOTO TOURS INC.
3111 S. VALLEY VIEW BLVD. X-106
LAS VEGAS, NEVADA 89102

ACCEPTED

AUG 28 2013

Nevada Transportation Authority
Las Vegas, Nevada

3rd REVISED PAGE 7
cancels
2nd REVISED PAGE 7

T.S.A.N. NO. 1

ADVENTURE PHOTO TOURS INC.
dba Adventure Photo Tours
dba. KISS Limousines
COMMON CARRIER OF PASSENGERS
TARIFF NO. 1

CHARTER SERVICE BY LIMOUSINE RATES AND CHARGES

1. Limousines limited to 4-wheel drive, unmodified as to length, sport utility vehicles with maximum passenger capacity of 8 including the driver
 - A. Standard SUV

Minimum Charge - one hour	\$ 50.00
Thereafter, billed in ½ hour increments of	\$ 25.00 per ½ hour
 - B. KISS wrapped SUV

Minimum Charge - one hour	\$100.00
Thereafter, billed in ½ hour increments of	\$ 50.00 per ½ hour
 - C. KISS w/Count's Kustom Paint SUV

Minimum Charge - one hour	\$120.00
Thereafter, billed in ½ hour increments of	\$ 60.00 per ½ hour
- LAS Airport Fees \$ 5.00 minimum
or actual cost if greater.
2. Seniors(over 60 years of age) with ID qualify for a discount of 20% of the above rates.

Driver gratuities are not included. Rates are exclusive of rates for accompanying staff and services (tour guide or interpreter services), toll charges, parking or other trip fees, park entrance fees or amenities.
3. Amenities will be at a cost plus \$ 10.00 per amenity
4. Cellular telephone charges will be at a cost plus \$ 2.00 per call

Amenities include, but are not limited to, flowers, gifts, & foods.

Each reservation has a minimum charge of one hour. Charges begin when the vehicle is dispatched (i.e., 20 minutes prior to pick up for strip and downtown hotels and airport; 30 - 45 minutes prior to pickup at residential, businesses and hotels located away from the strip or downtown.) charges end when the driver is estimated to return to the company station from the drop off point. Charges will accrue in ½ hour increments and not until 7 minutes or more have elapsed into the succeeding ½ hour.

ISSUED: 04/09/2013

EFFECTIVE: 06/01/2013

ISSUED BY:
DONNA M. TRYON, PRESIDENT
ADVENTURE PHOTO TOURS INC.
3111 S. VALLEY VIEW BLVD. X-106
LAS VEGAS, NEVADA 89102

ACCEPTED

AUG 28 2013

Nevada Transportation Authority
Las Vegas, Nevada

2nd REVISED PAGE 8
cancels
1st REVISED PAGE 8

T.S.A.N. NO. 1

ADVENTURE PHOTO TOURS INC.
dba Adventure Photo Tours
dba. KISS Limousines
COMMON CARRIER OF PASSENGERS
TARIFF NO. 1

SPECIAL SERVICES RATES AND CHARGES

Events at Las Vegas Motor Speedway	\$100.00 pp
Events & activities in Laughlin	\$200.00 pp
Events & activities in Boulder City	\$100.00 pp
Events & activities at Jean Airport	\$100.00 pp
Events & activities in Logandale	\$150.00 pp
Events & activities in Summerlin, Green Valley or Henderson	\$ 80.00 pp
Events & activities on Lake Mead	\$100.00 pp
Events & activities on Mt Charleston	\$150.00 pp
Events & activities at Red Rock NCA	\$100.00 pp
Events & activities in Mesquite	\$200.00 pp
Events & activities in Primm	\$150.00 pp
Events & activities in Pahrump	\$200.00 pp
Events & activities on the "Las Vegas Strip" (including Sands Expo)	\$ 20.00 pp
Events & activities on Fremont Street	\$ 35.00 pp
Events & activities at the LVCC or Thomas & Mack	\$ 35.00 pp

Per Capita charges apply to round trip transportation of passengers and their baggage for a specific itinerary including, but not limited to, visits to museums, Motor Sports Events, ATV Rentals, Jet Ski Rentals, Horseback Riding, Canoe or Kayak Rentals, Mountain Biking, Hiking and Rock Climbing and special events offered throughout the state. Per Capita charges do not include the fees for admission or rental of any item.

A minimum of two adult fares must be paid to warrant service being offered. If less than two individuals request that service be offered, that individual would be required to pay the full fare as though there were two individuals.

Services to locations not listed above may be offered using the following formula:

$$\frac{\text{Per Capita Fare}}{\text{Fare}} = \frac{\text{Est. No. of hours vehicle is to be dispatched}}{\text{be dispatched}} \times \$20.00$$

ISSUED: 04/01/2013

EFFECTIVE: 06/01/2013

ISSUED BY:
DONNA M. TRYON, PRESIDENT
ADVENTURE PHOTO TOURS INC.
3111 S. VALLEY VIEW BLVD. X-106
LAS VEGAS, NEVADA 89102

ACCEPTED
AUG 28 2013
Nevada Transportation Authority
Las Vegas, Nevada

ADVENTURE PHOTO TOURS INC
CPCN/Permit 1047

Original Page # 9

N.T.A. #1

3% TAX Pursuant to SECTION 51 of AB175

The following rules apply to carriers who provide passenger transportation, excluding airport transport service:

Pursuant to Nevada Legislative Senate Bill No. 376

Sec. 36. Section 51 of Assembly Bill No. 175 of this session is hereby amended to read as follows:

Sec. 51. 1. Except as otherwise provided in subsection 2 and in addition to any other fee or assessment imposed pursuant to this chapter, an excise tax is hereby imposed on the connection, whether by dispatch or other means, made by a common motor carrier of a passenger to a person or operator willing to transport the passenger at the rate of 3 percent of the total fare charged for the transportation, which must include, without limitation, all fees, surcharges, technology fees, convenience charges for the use of a credit or debit card and any other amount that is part of the fare. The Department of Taxation shall charge and collect from each common motor carrier of passengers the excise tax imposed by this subsection.

2. The provisions of subsection 1 do not apply to an airport transfer service.

3. (Intentionally omitted)

4. As used in this section, "airport transfer service" means the transportation of passengers and their baggage in the same vehicle, except by taxicab, for a per capita charge between airports or between an airport and points and places in this State. The term does not include charter services by bus, charter services by limousine, scenic tours or special services.

NOTE 1: The passenger transportation recovery charge must be passed along to all customers.

NOTE 2: The 3% passenger transportation recovery charge must be shown separately from the total fare as defined above.

<p>Issued:</p> <p>08/29/2015</p>	<p>Issued By:</p> <p>DONNA M. TRYON, PRESIDENT ADVENTURE PHOTO TOURS INC 3111 S. VALLEY VIEW BLVD X-106 LAS VEGAS, NV 89102</p>	<p>Effective:</p> <div data-bbox="1045 1661 1344 1843" style="border: 2px solid blue; padding: 5px; text-align: center;"><p>ACCEPTED</p><p><i>Intenim</i></p><p>AUG 31 2015</p><p><i>00-15-08048</i></p><p>Nevada Transportation Authority Las Vegas, Nevada</p></div>
-----------------------------------------	----------------------------------------------------------------------------------------------------------------------------------------------------	-------------------------------------------------------------------------------------------------------------------------------------------------------------------------------------------------------------------------------------------------------------------------------------------------